

SHERPA

CAPSULE OUTERWEAR
COLLECTION

PT. PINNACLE APPARELS

PEARL GLOBAL

Exceeding Expectations...Always

ABOUT SHERPA

Soft, warm and fluffy.

Sherpa is a closet essential. One reason you need Sherpa in your closet is because it will be the comfiest and warmest thing you own.

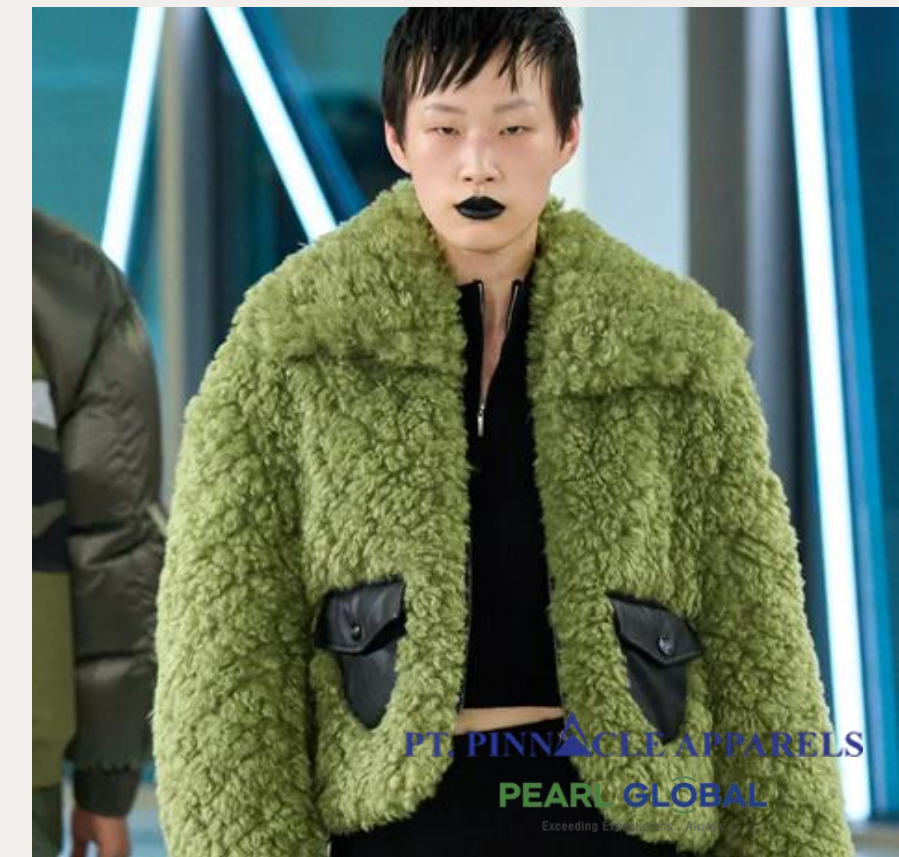




INSPIRATION



PT. Pinnacle Apparels brings you a compilation of the best of Fashion Week. In this capsule collection, we present Sherpa, inspired from the latest fashion runway of Fall-Winter 2024 season.



COLLECTION





BONDED PLAID SHERPA LONG JACKET

#PTP-SHERPA 09

Shell Fabric: Bonded Plaid Sherpa
Face: 100% Synthetic
Back: 100% Polyester
Weight: 500GSM

Pocket lining/ Binding: Poly Taffeta

Trim: Metal Snap Buttons

FEATURES

- Bonded Sherpa Fabric.
- Chest Pocket
- Side Seam Pocket
- Bias Back Yoke
- Metal Snap Closure





BONDED TRICOT STRIPE SHACKET

#PTP-SHERPA 011

Shell Fabric: Bonded Tricot Stripe
Brushed (320gsm)

Facing: Poly Cotton spandex (Sherpa fleece)

Trim: Metal Snap Button

FEATURES

- Sherpa Fleece Facing
- Metal Snap Closure
- Sherpa Fleece Binding at Back Yoke
- Moon patch at Inner Yoke





SHERPA VEST

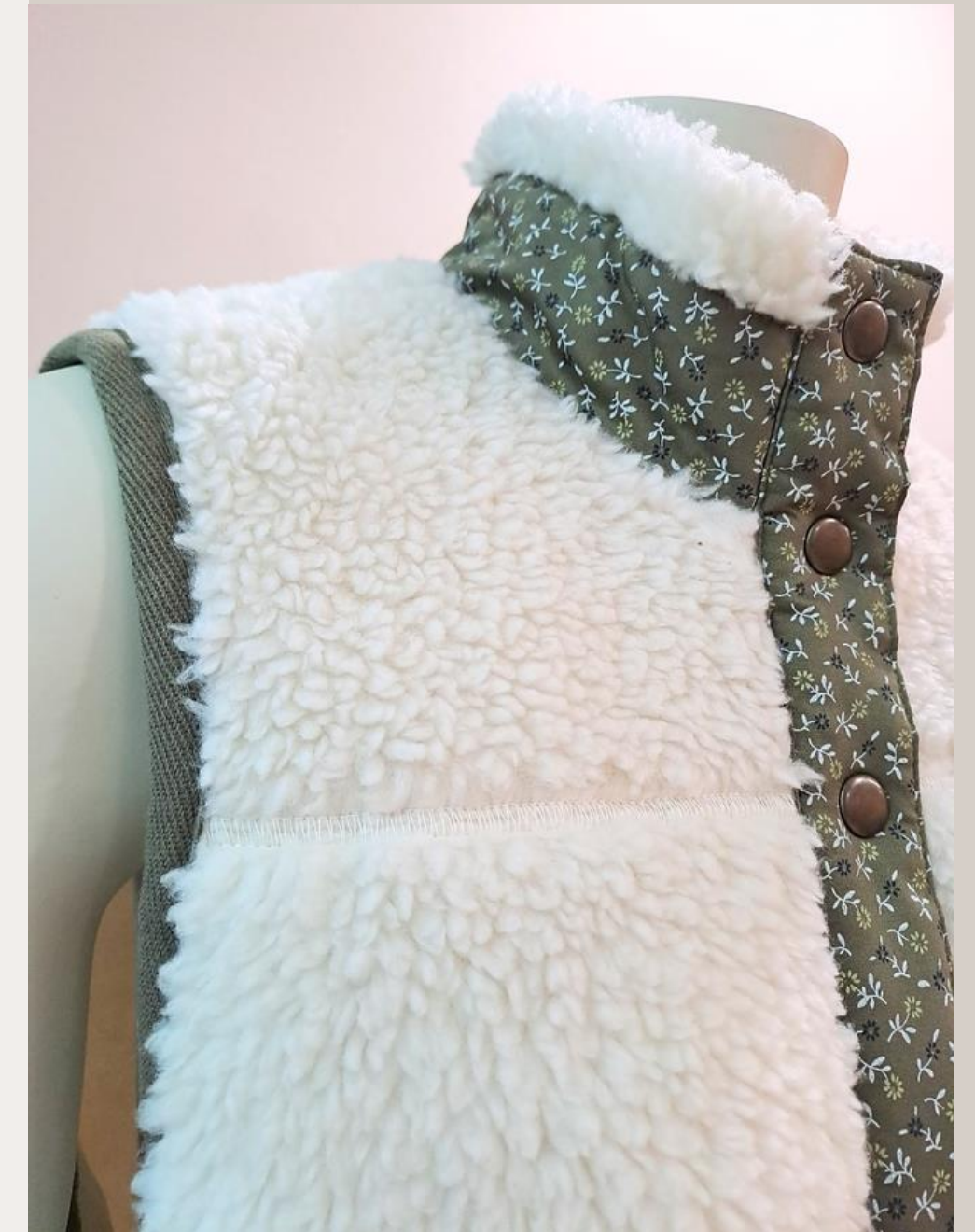
#PTP-SHERPA 014

Shell Fabric: Poly Sherpa
Combo Fabric: Printed Cotton
Lining Fabric: 100% Cotton

Binding: Cotton Twill Tape
Trim: Metal Snap Buttons

FEATURES

- Printed Combo Fabric
- Twill Tape Binding
- Side Seam Pocket
- Flat Lock Stitch
- Drawcord Adjuster at Hem





GREEN SHERPA VEST

#PTP-SHERPA 013

Shell Fabric: Poly Sherpa

Lining: Poly Taffeta

Trim: DTM Vislon Zipper

FEATURES

- Flat Lock Stitch
- Side Pockets
- Drawcord Adjuster at Hem





SHERPA VEST

#PTP-SHERPA 015

Shell Fabric: Poly Sherpa
Pocket Lining/ Binding: Poly Taffeta

Trim: Metal Snap Buttons

FEATURES

- Twill Tape Binding.
- Drawcord at Hem
- Side Seam Pocket
- Flat Lock Stitch

