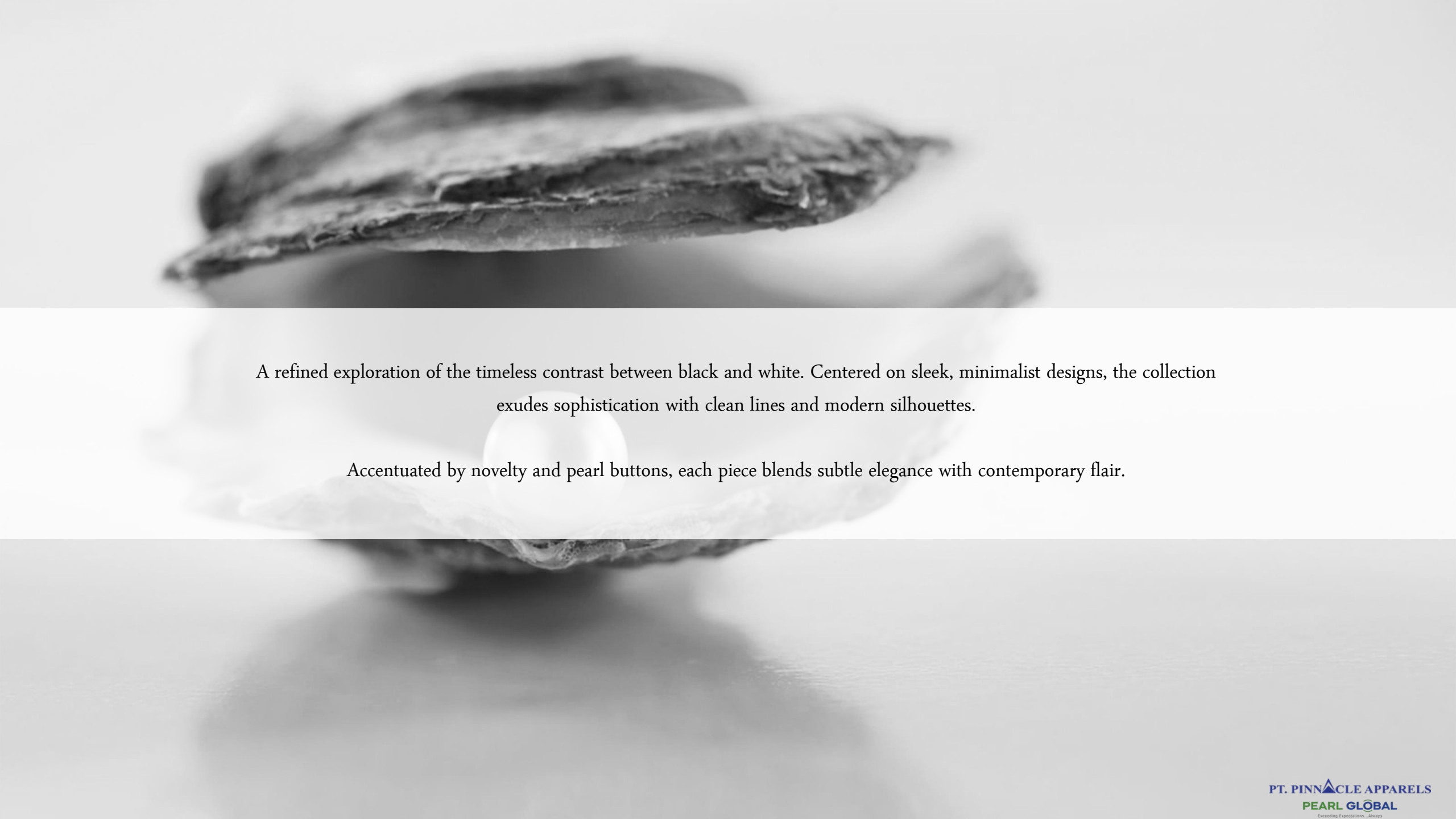


mono
chrome

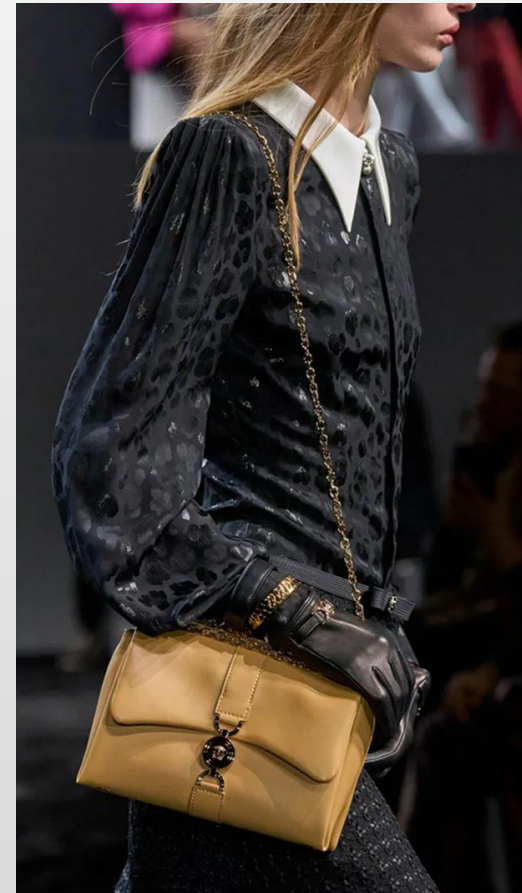


A refined exploration of the timeless contrast between black and white. Centered on sleek, minimalist designs, the collection exudes sophistication with clean lines and modern silhouettes.

Accentuated by novelty and pearl buttons, each piece blends subtle elegance with contemporary flair.

RUNWAY INSPIRATION

The timeless combination of black and white took center stage on the runway, with designers incorporating this chic pairing into their collections. Caroline Herrera, David Koma, Versace, and Balmain embraced black and white combinations, adding a timeless elegance to their designs.



OUR COLLECTION



CONTRAST LACE DETAIL SHIRT

PTP_BLS_208

Poly satin
100% Polyester

Combo: Poly Lace
100% Polyester





POLKA DOT SHIRT WITH VELVET COLLAR

PTP_BLS_084

Poly Crepe/ Printed
100% Polyester





COWL PLACKET SHIRT W/ PEARL BUTTONS

PTP_BLS_225

Poly Jacquard
100% Polyester





JACQUARD SHIRT W/ CONTRAST COLLAR AND TRIM

PTP_BLS_213

Animal/Leopard Motif Poly Jacquard
100% Polyester





Resource Pages

We use these design resources from Vouge fashion runways and updated silhouettes from high end designers along with farefetch.com.

We hope you like the themes we are working on for this Fall.

Happy Designing!

