



# METALLIC ACCENT

A striking contrast against the earthy tones, both metal trims and shiny fabrics bring a modern, edgy sophistication to the designs.  
A bold interplay of textures, balancing warmth with sleek, polished finishes.

# RUNWAY INSPIRATION

Shiny fabrics are making a bold statement in Fall fashion, bringing a touch of glamour and sophistication to seasonal wardrobes. Designers are incorporating these luminous materials—such as satin, silk, metallic weaves, and high-gloss synthetics



# OUR COLLECTION



# BOUCLE JACKET W/ NOVELTY TRIM

# PTP\_JKT\_047

Boucle Lurex  
530GSM  
99% Polyester 1% Other





# HOUNDSTOOTH BOUCLE W/ NOVELTY TRIM

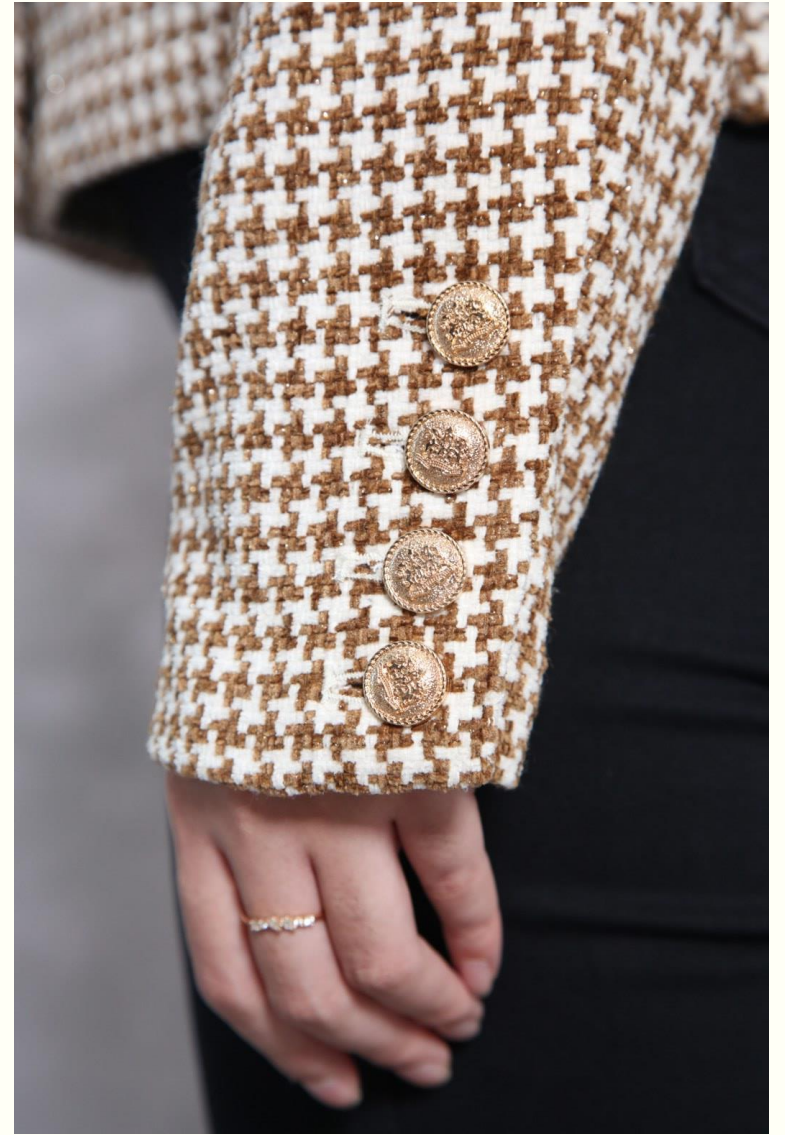
# PTP\_JKT\_058

Boucle/ Houndstooth pattern

505GSM

99% Polyester 1% Other







# SHERPA SHORT JACKET WITH CARABINER CLIP

# PTP\_JKT\_059

Poly Sherpa  
410GSM  
100% Polyester

Combo: Fake Leather/ PU  
100% Polyester





# POLY WOOL TOGGLE JACKET

# PTP\_JKT\_050

Poly wool/ brushed

380GSM

90% Polyester 10% Wool

Lining: Poly Taffeta/ Quilted

100% Polyester

Insulation: 80gm Padding





# SILVER LAMINATED PADDED JACKET

# PTP\_JKT\_045

Crinkled Nylon/ Silver Lamination

77GSM

100% Nylon

Lining: Poly Taffeta

100% Polyester

Insulation: 150gm Padding





# SHINY PADDED JACKET W/ SHERPA COLLAR

# PTP\_JKT\_053

Poly Mini Ribstop/ Shiny PU

100% Polyester

55GSM

Combo Collar: Poly Soft Sherpa

100% Polyester

840GSM

Insulation: 150gm Padding







# Resource Pages

We use these design resources from Vogue fashion runways and updated silhouettes from high end designers along with farefetch.com.

We hope you like the themes we are working on for this Fall.

Happy Designing!

