

# HARVEST HUES

An aerial photograph of a vast agricultural field, likely a cornfield, showing distinct rows of crops. In the center of the field, a combine harvester and a white truck are visible, engaged in harvesting. The lighting is bright, casting shadows from the machinery. The left side of the image features a vertical gradient bar transitioning from light beige to a darker brown.

# HARVEST HUES

The collection emphasizes texture, blending cozy fabrics with timeless silhouettes that capture the essence of countryside chic with an urban edge. The mix of materials brings warmth and sophistication, perfect for transitioning into cooler months.

# RUNWAY INSPIRATION

The runway gravitated towards natural fabrics, featuring cozy, textured layers like corduroy, shearling and tweed, draws on earthy tones like brown and cream, evoking a rustic yet refined aesthetic.



---

# Our Collection



# QUILTED CORDUROY W/ SHERPA COMBO

# PTP\_JKT\_049

Corduroy/ 8.82 OZ  
100% Cotton

Combo Collar: Poly Sherpa  
100% Polyester

Lining: Brushed Plaid  
65% Viscose 35% Re-Polyester

Insulation: 80gm Padding





# CORDUROY FAUX FUR COMBO JACKET

# PTP\_JKT\_048

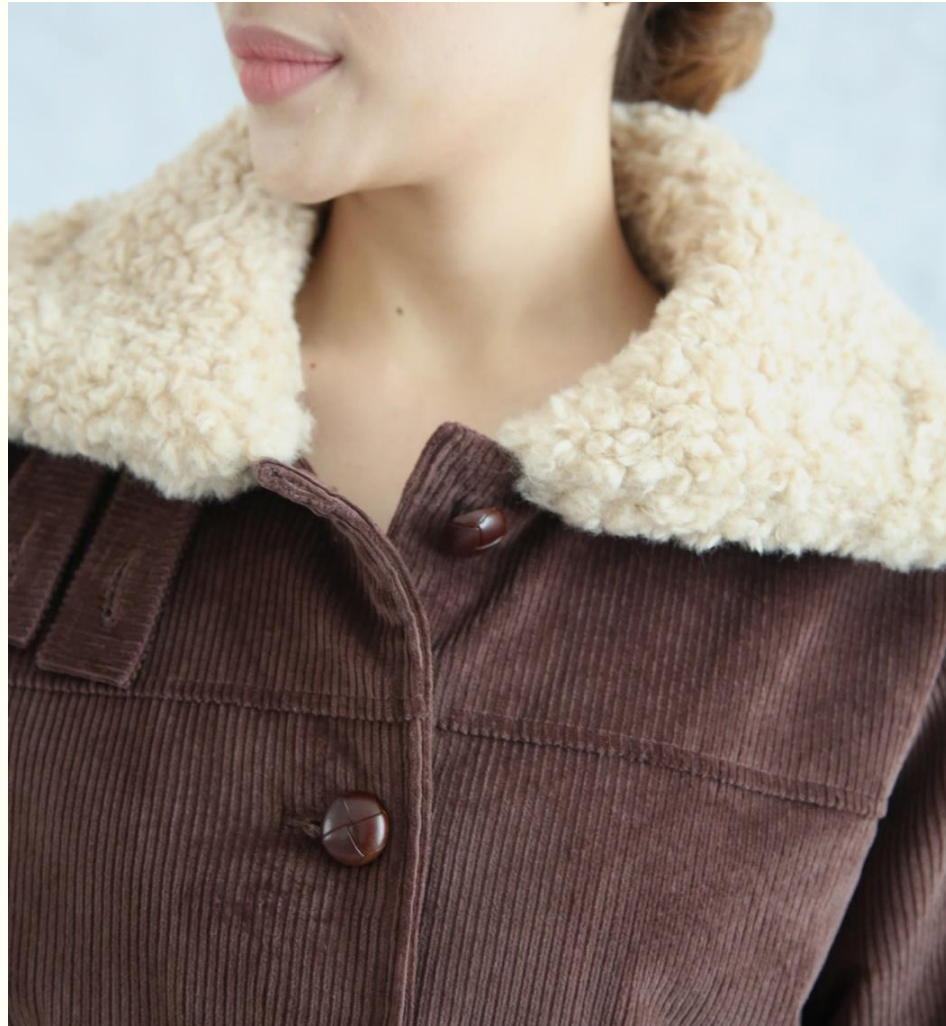
Corduroy/ 18W  
98% Cotton 2% Spandex

Combo/ Carly Faux Fur  
100% Polyester

Lining: Nylon Taffeta/ Quilted  
100% Nylon

Insulation: 80gm Padding







# CREAM SHERPA SHACKET

# PTP\_JKT\_040

Sherpa/ Cream Color  
100% Polyester

Combo: Nylon Taffeta/ Padded  
100% Nylon





# HERRINGBONE FLANNEL W/ SHERPA COMBO JACKET

# PTP\_JKT\_051

Y/D Flannel/ Brushed Herringbone  
100% Cotton

Combo: Poly Sherpa  
100% Polyester





# Resource Pages

We use these design resources from Vogue fashion runways and updated silhouettes from high end designers along with farefetch.com.

We hope you like the themes we are working on for this Fall.

Happy Designing!

