




Sheer Elegance



With flowing drapes and 3D textured fabrics, the collection embraces the ethereal allure of sheer fabrics, creating a delicate balance between sophistication and sensuality.

A subtle touch of floral elements brings a hint of nature's beauty to the collection, making it a perfect blend of softness and statement

RUNWAY INSPIRATION

Sheer fabrics exuded ethereal elegance on the runway, with designers embracing lace and sheer overlays. Saint Laurent featured sheer elements prominently throughout the majority of its runway presentation.

Gucci and Valentino showcased sheer elements in romantic looks, while Chloe incorporated sheer details into skin-baring cocktail dresses. Roberto Cavalli, Elie Saab, and Alberta Ferretti experimented with delicate, lacy details and silk ensembles featuring sheer elements.



OUR COLLECTION



FLORAL PATCH COWL NK TOP

PTP_BLS_205

Yoryu Chiffon
100% Polyester

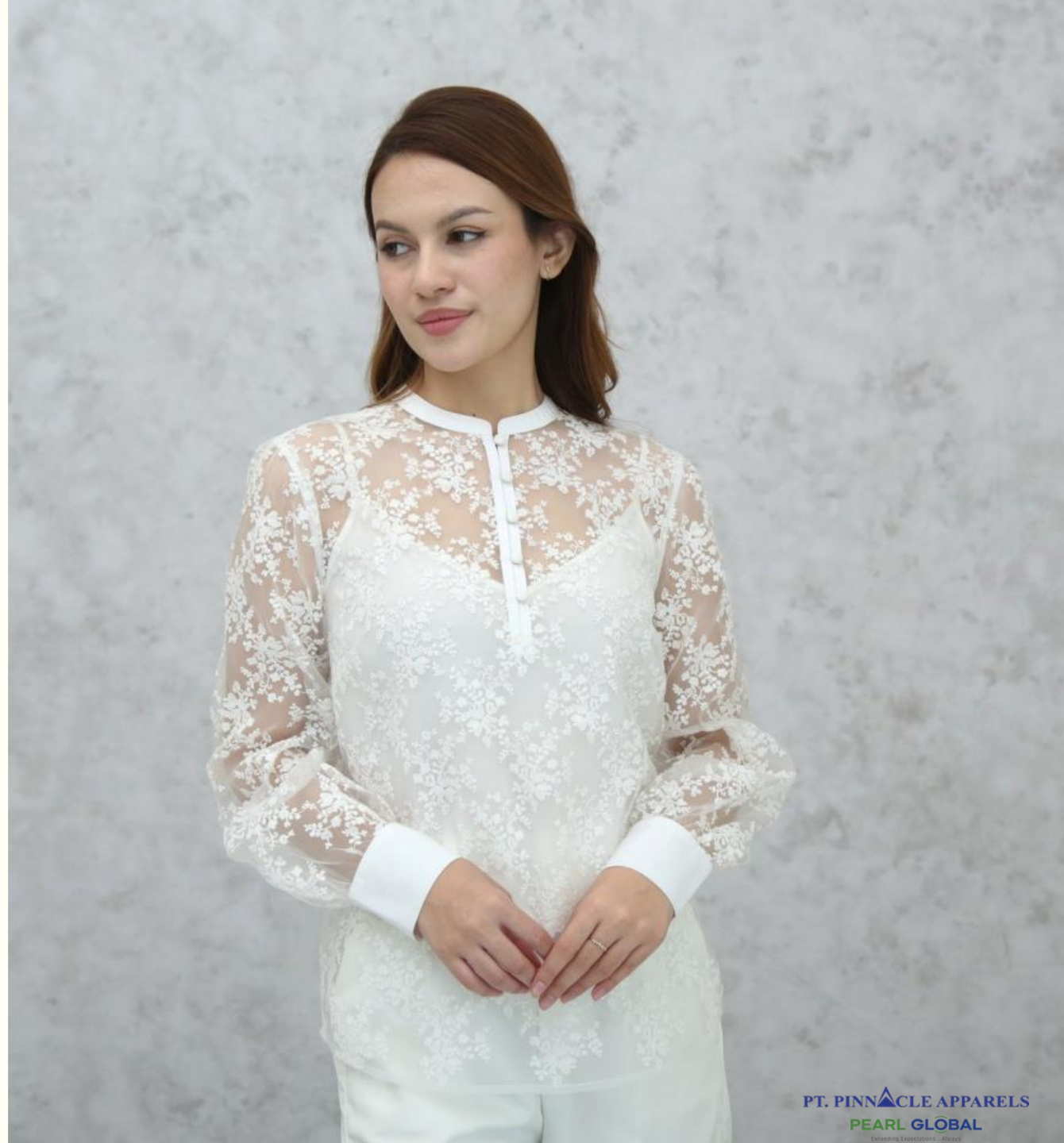




EMBROIDERED ORGANZA BLOUSE

PTP_BLS_212

Embroidered Organza
60% Cotton 40% Polyester





FAGGOTING DETAIL FRILL BLOUSE

PTP_BLS_206

Crinkle Chiffon
100% Polyester





BURNOUT VELVET PAISLEY SHIRT

PTP_BLS_222

Burnout Velvet
75% Viscose 25% Nylon





3D JACQUARD FLORAL BLOUSE W/ SATIN BINDING

PTP_BLS_218

Y/D Poly Jacquard/ 3D Motif
100% Polyester





Resource Pages

We use these design resources from Vogue fashion runways and updated silhouettes from high end designers along with farefetch.com.

We hope you like the themes we are working on for this Fall.

Happy Designing!

